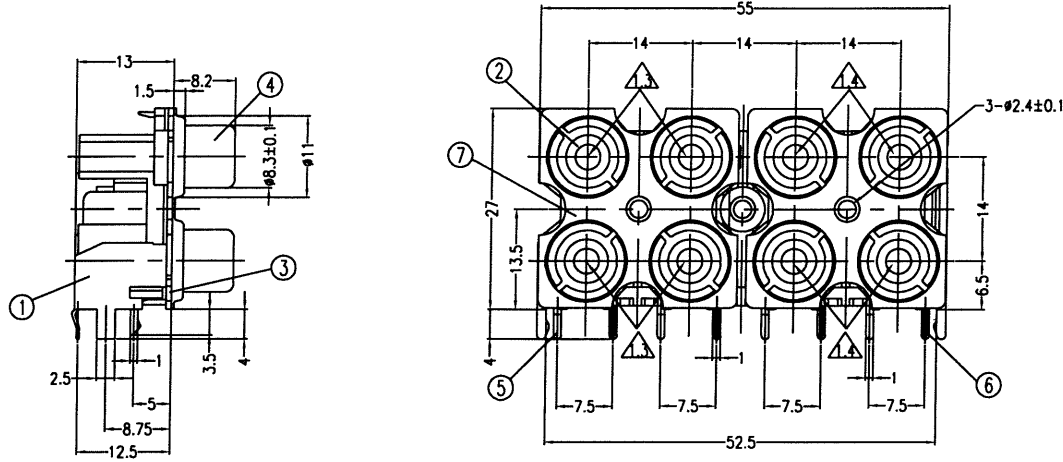
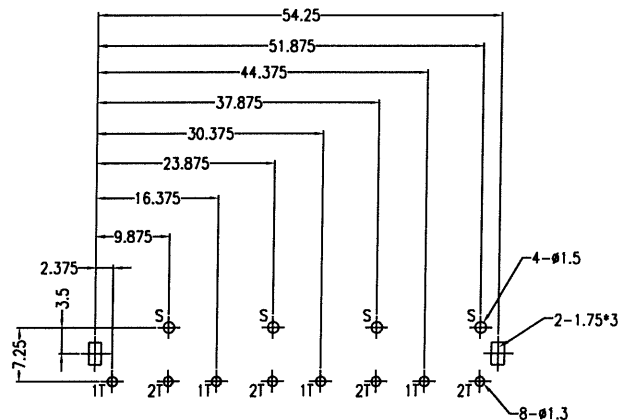


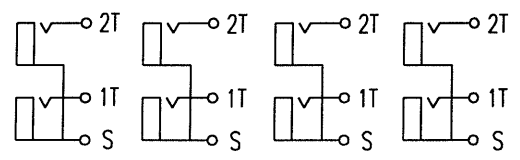
REV.	REF.	DESCRIPTION	DATE
A	2006-185	RELEASE NEW DRAWING FOR PRODUCTION	04/05/2005



- NOTES:
- MATERIAL:
 - 1.1 INSULATOR: PBT+30% GLASS FILLED, UL94V-0
 - 1.2 CONTACTS: BRASS, TIN PLATED
 - 1.3 INSULATION COLOR: YELLOW
 - 1.4 INSULATION COLOR: WHITE
 - 1.5 ALL COMPONENTS ARE RoHS COMPLIANT
 - UNLESS OTHERWISE SPECIFIED, TOLERANCE ON DECIMAL: ±0.3
 - PACKING:
 - 3.1 TRAY PACKING
 - 3.2 SHIPPING CARTON WILL HAVE CUSTOMER PART NUMBER



T:1.6 Dimensions of PC board holes
Tolerance : ±0.1(Printed-side view)



CIRCUIT

LTR	PART NAME	QTY	MATERIAL	REMARK
7	SEALED PLATE	2	BRASS	TIN PLATED
6	TERMINAL	4	BRASS	TIN PLATED
5	TERMINAL	4	BRASS	TIN PLATED
4	OUTER CONTACT	4	BRASS	TIN PLATED
3	COVER	4	PBT+30% G.F	UL94V-0
2	WASHER	8	PBT+30% G.F	UL94V-0
1	HOUSING	1	PBT+30% G.F	UL94V-0

THESE DRAWINGS AND SPECIFICATION ARE THE PROPERTY OF RAPID CONN INC. AND SHALL NOT BE REPRODUCED, COPIED OR USED IN ANY MANNER WITHOUT THE PRIOR WRITTEN CONSENT OF RAPID CONN INC.

SIGNATURE	DATE	DESCRIPTION :
DRN. ANNIE AI	04/05/2005	RCA QUAD PAIR JACK, PC MOUNT
CHK. R-DW	4/11/05	RAPIDCONN P/N:
APP. FL	A-11-05	CUSTOMER P/N :
		RC-8-13P
		N/A

CODE NO.	N/A	X±0.5	X±3.0
CUS. NO.	N/A	.X±0.3	.X±2.0
MATERIAL	N/A	.XX±0.10	.XX±1.00
		.XXX±0.050	.XXX±0.500
SCALE	UNIT	PAGE	
FREE	MM	1/1	



DWG NO. RC-8-13P