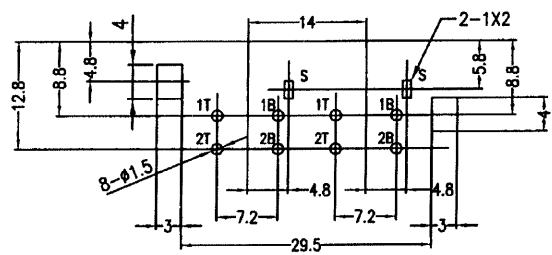
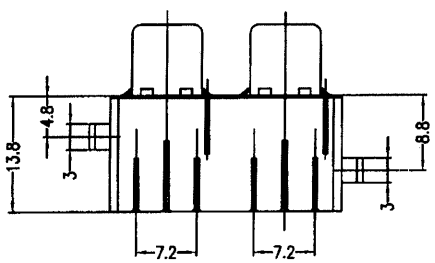
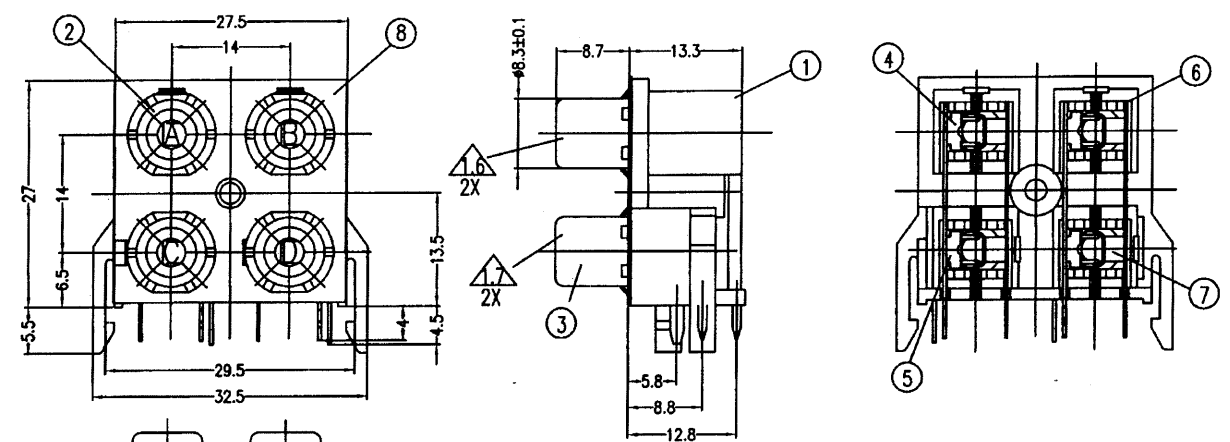
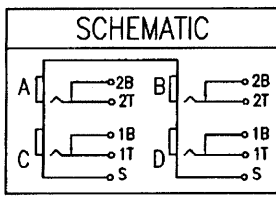


REV.	REF.	DESCRIPTION	DATE
A	2006-277	RELEASE NEW DRAWING FOR PRODUCTION	05/20/2005



T:1.6 Dimensions of PC board holes
Tolerance : ±0.1(Printed-sided view)



- MATERIAL:
 - HOUSING AND WASHER: PBT, UL94V-0
 - OUTER CONTACT: BRASS, TIN PLATED
 - SHUNT TERMINAL: BRASS, SILVER PLATED
 - TIP SPRING: PHOSPHOR BRONZE, SILVER PLATED
 - SEALED PLATE: SPCC, TIN PLATED
 - INSULATION COLOR: WHITE
 - INSULATION COLOR: RED
 - ALL COMPONENTS ARE RoHS COMPLIANT
- MECHANICAL:
 - INSERTION FORCE: 29.4N MAX.
 - WITHDRAWAL FORCE: 0.98N TO 29.4N
- ELECTRICAL:
 - RATED VOLTAGE/RATED CURRENT: DC34V 2A
 - INSULATION RESISTANCE: 100 MEGOHMS MIN.
 - CONTACT RESISTANCE: 30 MILLIOHMS MAX.
 - DIELECTRIC STRENGTH: 500V AC r.m.s FOR 1 MINUTE
 - OPERATING TEMPERATURE RANGE: -25°C TO 70°C
- UNLESS OTHERWISE SPECIFIED, TOLERANCE ON DECIMAL: ±0.3
- PACKING:
 - SHIPPING CARTON WILL HAVE CUSTOMER PART NUMBER

8	SEALED PLATE	1	SPCC (T=0.3)	TIN PLATED
7	TIP SPRING (S)	2	PHOSPHOR BRONZE (C5210 T=0.3)	SILVER PLATED
6	TIP SPRING (L)	2	PHOSPHOR BRONZE (C5210 T=0.3)	SILVER PLATED
5	SHUNT TERMINAL (S)	2	BRASS (C2680 T=0.4)	SILVER PLATED
4	SHUNT TERMINAL (L)	2	BRASS (C2680 T=0.4)	SILVER PLATED
3	OUTER CONTACT	2	BRASS (C2680 T=0.4)	TIN PLATED
2	WASHER	4	PBT	UL94V-0
1	HOUSING	1	PBT	UL94V-0
LTR	PART NAME	QTY	MATERIAL	REMARK

THESE DRAWINGS AND SPECIFICATION ARE THE PROPERTY OF RAPID CONN INC. AND SHALL NOT BE REPRODUCED, COPIED OR USED IN ANY MANNER WITHOUT THE PRIOR WRITTEN CONSENT OF RAPID CONN INC.

DRN.	ANIE AI	05/20/2005	DESCRIPTION :	CODE NO.	N/A
CHK.	<i>Arjun</i>	<i>05/20/2005</i>	RCA CONNECTOR, 4 POSITION	CUS. NO.	N/A
APP.	<i>FL</i>	<i>5-22-06</i>	RAPIDCONN P/N:	MATERIAL	N/A
			RC4-43P		
			CUSTOMER P/N :		
			N/A		

SCALE	UNIT	PAGE
FREE	MM	1/1



DWG NO. RC4-43P