



Rapid Conn, Inc.
 19571 Pauling
 Foothill Ranch, CA 92610-2606
 Tel: (949) 951-1020
 Fax: (949) 951-8265
 www.rapidconn.com

Connect City Pte Ltd.
 71, UBI Crescent
 #04-02 Excalibur Centre
 Singapore 408571
 Tel: 65-7410612
 Fax: 65-7410639



SERIAL ATA* CONNECTOR DEVICE

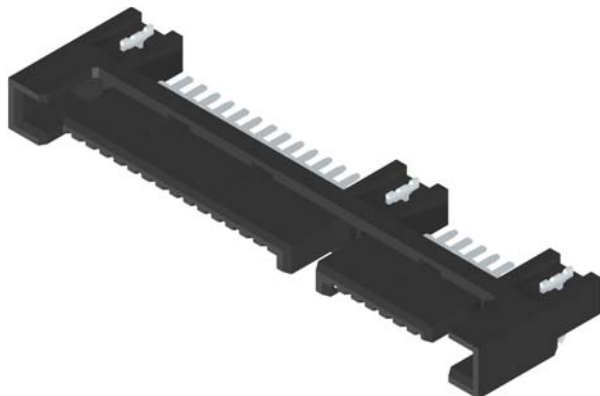
What is Serial ATA?

Serial ATA is a storage interface specification for the next-generation computing platform. This interface connects all ATA and ATAPI storage **devices**, including CDs, DVDs, tape devices, high capacity removeable devices, zip drives, and CDRW's to the motherboard or daughterboard and is the replacement for today's Parallel ATA physical storage interface.

Serial ATA technology will allow for platform cost reductions and performance improvements such as hot-plugability while supporting a seamless transition from Parallel ATA technology. Serial ATA will supply storage interface headroom for many generations to come, beginning with 1.5 Gbps, and scalable to 2x, 4x and beyond. At the same time, Serial ATA is a drop-in solution that is compatible with existing ATA software drivers and will run on standard operating systems without modification. It will provide for systems that are easier to design, with narrower cables that are simple to route and install, smaller cable connectors, improved silicon design, and lower voltages, which alleviate current design constraints in Parallel ATA. Configuration of Serial ATA devices will be much simpler, with many of today's requirements for jumpers and settings no longer needed.

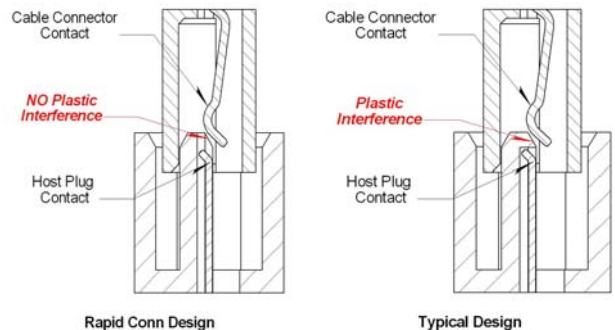
Serial ATA – Device Plug Connector

Our combined fifteen (15) position power and seven (7) position signal Device Plug Connector adheres to the industry standard Serial ATA specification while providing valuable features and benefits.



Features and Benefits

- **Right angle and low profile design minimizes real estate usage. Low profile or extra-low profile options are available.**
- **Designed for manufacturability offers optional thru-hole and SMT configurations.**
- **Our design offers a pure contact-to-contact interface providing superior durability and protection from plastic contamination.**



Technical Specifications	
Electrical	
Current	1.5A / Contact
Contact Resistance (Initial)	30 mΩ max.
Dielectric Withstanding Voltage	500 VAC for 1 min. at sea level
Insulation Resistance	1000 MΩ min.
Mechanical	
Body	High Temperature Thermoplastic
Contact	Copper Alloy
Plating - Contact	Selective Gold
Operating Temperature	-25 to +85°C

*Serial ATA is a trademark of the Serial ATAsm Trade Association - www.serialata.org