

# USB 2.0 CONNECTOR

USB A TYPE 4PIN MALE 90° DIP

page 5

## 1. Material:

Contacts: Brass  
Insulator: PBT+30% G.F. UL 94V-0  
Shell: SPCC

## 2. Environmental:

Temperature: Range -55°C~+85°C

## 3. Mechanical:

Mating: 35N max.  
Withdrawal Force: 10N min.  
Durability: 1500 cycles min.

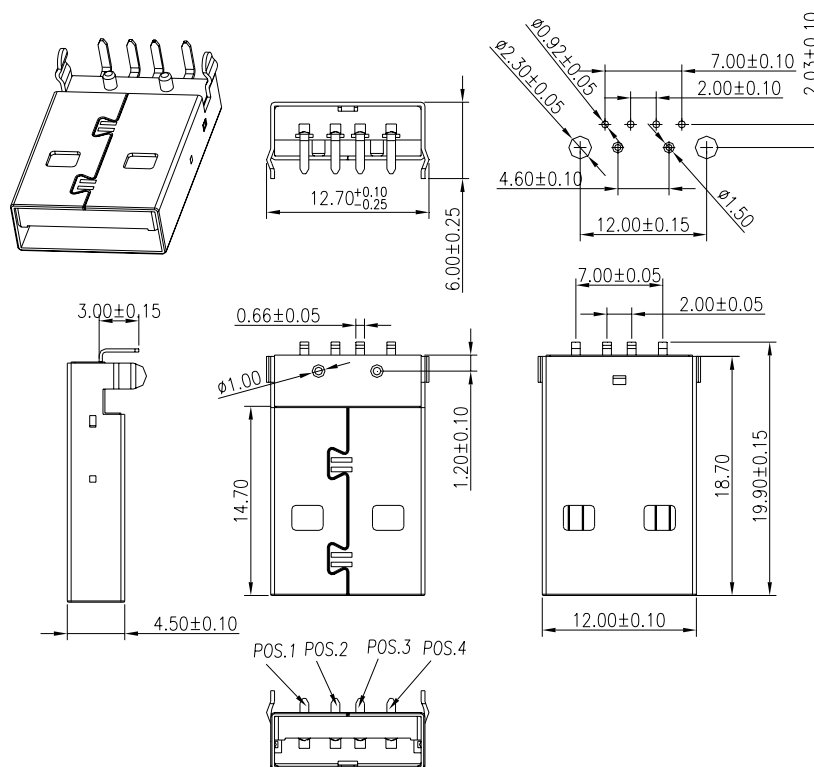
## 4. Electrical:

Current-max [amps]: 1.5A  
Voltage-max [volts]: 30V  
Withstanding Voltage: 500V AC  
Contact Resistance [ohms]: 30 milliohms max  
Insulation Resistance [ohms]: 1000 Megohms min

## 5. Plating:

Contacts: 30u" Gold and Tin Over Nickel Plated  
Shell: Nickel over all plating

## 6. Product Drawing:



## 7. Ordering Information:

Part Number:  $\frac{A02M}{1} \frac{1}{2} \frac{E}{3} \frac{L}{4} \frac{04}{5} \frac{1}{6} \frac{05}{7}$

Note: 1. A02M: USB A type male series

2. 1: black insulation (may choose other color of insulation)

3. E: gold plated 30u" min. contacts

4. L: nickel plated shell (may choose other plated of shell)

5. 04: pin No.

6. 1: 90° DIP type

7. 05: serial No. (It's used to distinguish similar product, from 00 to 99)